

EXPLORER
SERIES

WH2400i

(CARB Compliant)
Inverter Generator



WH2400i
2400 STARTING WATTS • 2100 RUNNING WATTS

EXPLORER
SERIES

2100 / 2400
RUNNING WATTS STARTING WATTS



Westinghouse

INNOVATION YOU CAN BE SURE OF

WH2400i Units Are Parallel Capable

Parallel capability allows you to combine (2) units for **DOUBLE** the power using our simple to use WHPC parallel power cord (not included).

No bulky, complicated junction boxes, hardware or complicated ground terminal wiring needed with this easy-to-use, compact system.



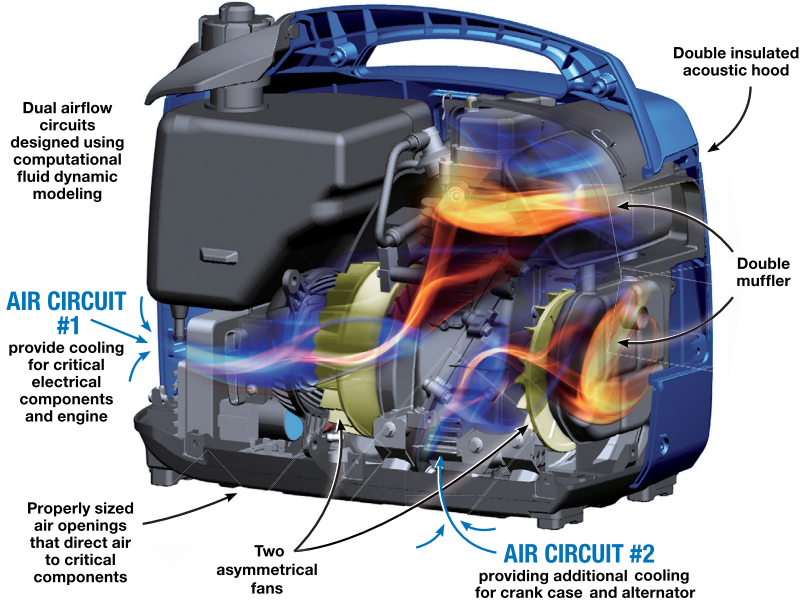
WH2400i Parallel Capable* Digital Inverter Generator

*Cord Sold Separately. Please request WHPC P/N 260041

What is a Digital Inverter Generator?

Digital inverter generators work by generating AC (alternating current) power at a high frequency. It is then converted to DC (direct current), then back to alternating current that can be used by electronic equipment and appliances. This process is often called "clean power" which means stable and consistent voltage/frequency and a stable sine wave delivery. This will not cause a fluctuation in frequency which happens with traditional generators. Uncontrolled fluctuations of power are very dangerous to many high-tech and sensitive electronics such as computers. Inverter generators are a perfect fit for recreational use and emergency backup power.

The engine speed of inverter generators is regulated to match the load on the generator, unlike traditional generators that run at a constant speed with no variation to engine speed. Inverter generators have the ability to adjust engine speed to produce the correct amount of power required to run the appliances being used. Inverter generators are more fuel efficient and make less noise and vibration than traditional generators. This makes inverter generators economical to operate and environmentally friendly.



When you are ready to go camping, tailgating or just need a reliable portable power supply, the Westinghouse WH2400i provides efficient, quiet and clean energy for all your sensitive electronic needs - while offering parallel capabilities.

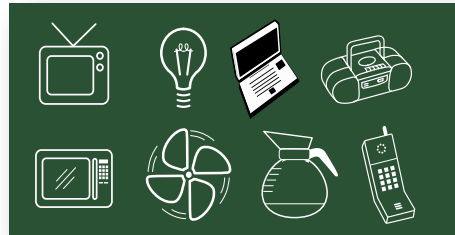
Producing 2100 running watts of power and weighing only 43 lbs., this 4 cycle, gasoline powered generator will run 11 hours at 50% load. This unit provides two, 120V, AC outlets, dual USB ports and contains all you need to get started right out of the box - **including the oil**. The WH2400i is very quiet making it the perfect companion for all your recreational needs.

1- TO 2-PULL STARTING

Yellow coded touch points for easy starting

CLEAN POWER

< 3% THD electrical output
Dual USB ports



Specifications

Generator Type	WH2400i Digital Inverter
Running Watts	2100
Starting Watts	2400
Amps	17.5A / 20A
Engine Type	Westinghouse, 4 Stroke, 79cc, OHV
Starting Method	Recoil
Outlets	(1) Duplex, NEMA 5-20R 125V, (1) 12V DC8.3A, (2) USB 10A
Fuel Tank	1.3 Gallon
Run Time	14.5 hours at 25% load / 11 hours at 50% load
Housing	High impact plastic, vibration mounted, sound attenuated, double insulated case
Portability	Light weight, ergonomically designed

Accessories Tool kit, 13.5 oz engine oil & EZ fill oil bottle

Warranty 2 Year Limited

Sound Output 52 dbA at 25% load / 59 dbA at 50% load

Emissions EPA & CARB Certified

Benefits & Features



- 1) Power indicator light
- 2) AC overload reset
- 3) High efficiency run mode
- 4) Low oil shut down
- 5) Color coded user touch points
- 6) Parallel Capable*
- 7) Less than 3% THD
- 8) Dual USB ports

Dimensions & Weight

Carton Dimensions 21.3" L x 13.8" W x 20.0" H

Unit Dimensions 20.3" L x 12.5" W x 17.8" H

Unit Weight 43 Pounds

Westpro Power Systems, LLC
W237 N2889 Woodgate Road, Unit B
Pewaukee, WI 53072 USA

Service Hotline: (855) 944-3571

© 2015

WESTINGHOUSE, and INNOVATION YOU CAN BE SURE OF are trademarks of Westinghouse Electric Corporation. Used under license. All Rights Reserved.

*Cord Sold Separately. Request Parallel Cord WHPC Part Number: 260041

WH2400i
September 2015



Westinghouse

INNOVATION YOU CAN BE SURE OF

www.westpropower.com